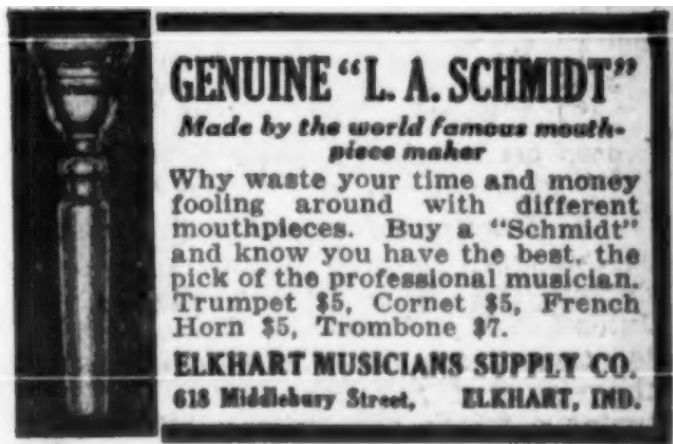


Leopold August Schmidt

Koln, Germany

- 1893 Leopold Schmidt inherits a brass instrument business at his father Fredrich's death (*New Langwill Index*).
- 1902 Schmidt demonstrates a screw-rim mouthpiece (*NLI*).
- 1921 Leopold passes away and his widow, Helene, is now the owner (*NLI*).
- 1930 Ad in *International Musician* for Schmidt mouthpieces.



- 1935 Similar ad for Schmidt mouthpieces.



- 1938 Helene Schmidt sells the business to Gebruder Alexander (*NLI*).

Mouthpieces found say, "Orig. Schmidt's Intervall" or "L.A. Schmidt Coln." They are likely the source for what's called the "Schmidt" backbone.

